

# Wastepaper basket

Height 30 cm – Diameter 25 cm







## Teaser: Wastepaper basket









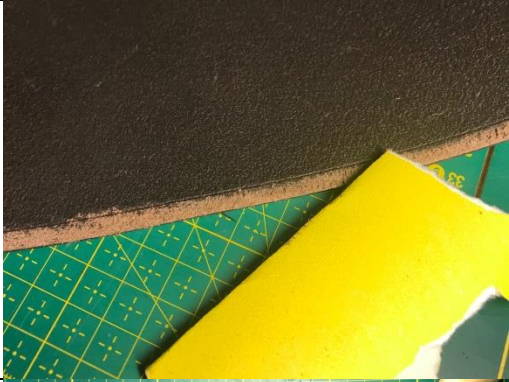


### The products you need:

- Leather 2.6/2.8 or 3 mm thick and minimum 50x120 cm
- Cork, large
- Handle for awl, 2 pcs
- Diamond-shaped awl, 50 mm
- Round awl, 50 mm
- Japanese chisel, 5 mm, 4 prongs
- Wing divider
- Japanese stitching groover (you could also use the wing divider as an alternative)
- Space maker, size 5
- Sewing needles, size 4
- Edge beveler, Osborne size 2
- Waxed linen thread, 5 cord, nature, 50 g
- Contact glue – Klebfest 90 g
- Sandpaper 120 grit and 600 grit
- Steel square
- Rotary knife
- Scissors
- Plastic hammer
- Ruler, 100 cm
- Ink Edge Colour
- Wool dauber, small
- Cutting board, 60 x 45 cm
- Punching board (or a nylon board)

<p><b>Step 1</b> <b>(Placing the various parts)</b></p> <p>The template shown in the picture can be downloaded and printed out further down this page. Please don't scale directly from the drawing, as the dimensions are not proportional.</p>	
<p><b>Step 2</b> <b>(Sketching out the template - bottom)</b></p> <p>Sketch out the template on the back of your leather (see the template in step 1). Make two circles with a diameter of 25 cm. Adjust your wing divider to 12.5 cm and outline the circles on the leather.</p>	
<p><b>Step 3</b> <b>(Sketching out the template - side piece)</b></p> <p>Draw a square measuring 30 cm x 82 cm. The piece can be longer than 82 cm but not any shorter. The length will get adjusted later in the process. Use your steel square to make sure that the corners are perpendicular. Cut out the side piece.</p>	
<p><b>Step 4</b> <b>(Bottom)</b></p> <p>Use a pair of leather scissors to cut out the two bottom pieces (picture 1). After that, smooth out the edges by using your fingers (picture 2).</p>	

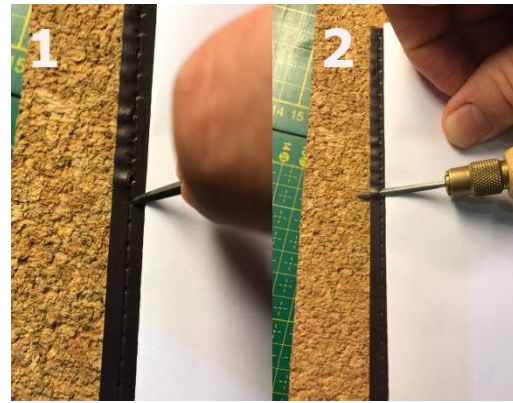


<p><b>Step 5</b></p> <p>Glue the two bottom pieces together by their back sides.</p> <p>Start out by sanding the back of the leather to create a rough surface. Apply a thin, even layer of glue on both the bottom pieces and let the glue dry 10-15 minutes before assembling them. Make sure that the edges of the bottom pieces align.</p>	
<p><b>Step 6</b></p> <p>Sand the edge of the bottom piece, so that it gets nice and even.</p>	
<p><b>Step 7</b></p> <p>Adjust the setting to 4 mm on your Japanese stitching groover (with the guide mounted on) or on your wing divider.</p> <p>Make a crease all the way around the bottom - just on one of the two sides.</p>	
<p><b>Step 8</b></p> <p>In the crease, you have to mark, where your stitches will be by using a space maker (5 mm).</p>	

<p><b>Step 9 (Testing)</b></p> <p>Test to see if the side piece fits around the bottom piece. Place the side piece around the bottom and use a leather marking pen to mark, where you want to cut the length. Cut off the excess leather - use a steel square to ensure that the corners are still perpendicular.</p>	
<p><b>Step 10</b></p> <p>The side piece: use a groover or a wing divider to make a crease 4 mm from the edge on the front of the leather. Make a crease on all four edges. Make a crease 5 mm from the edge on one of the long sides on the back.</p>	
<p><b>Step 11</b></p> <p>Sand the leather with sandpaper from the crease and 5 mm out towards the edge. NB! It is only the crease on the back that you need to sand. Sanding this part will make the leather rough and easier to glue later in the process.</p>	
<p><b>Step 12</b></p> <p>Bevel the opposite long side on the back. Turn around the leather piece and bevel both long sides on the front.</p>	
<p><b>Step 13 (Edge colour)</b></p> <p>Apply edge colour on the two long sides. Let it dry completely and sand lightly with a piece of sandpaper 600 grit. Apply a second coat of edge colour. Repeat the process until you are pleased with the result.</p>	

**Step 14**  
**(Marking the stitching on the side piece)**

Mark where your stitches are going to be on the two sides that will be connected. Before moving on in the process, you need to make sure that the two sides align and are of the same length. Don't pierce the holes yet – just make the markings. Make sure that the holes on the two pieces are parallel to each other. Use a diamond-shaped awl to pierce the holes. Put the leather on a piece of cork facing upwards. Make the holes by keeping the flat part of the awl facing upwards. The tip of the awl is supposed to come out in the middle of the edge of the leather (see picture 2). You can use a piece of A4 paper to protect the leather from any scratches from the awl.



**Step 15**

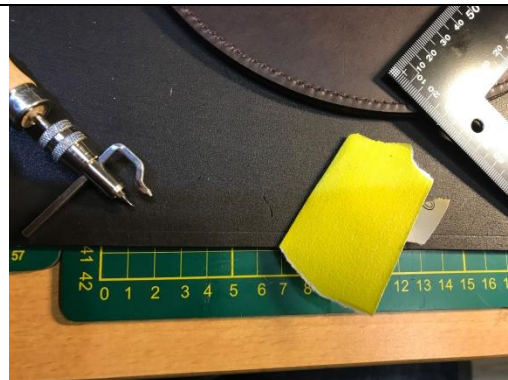
Once you have made all the stitching holes on both ends of the side piece, you will have to make holes by using an awl on the long side that will end up being the top part of the wastepaper basket.

Use a 4-pronged Japanese chisel to make the holes. Put one of the prongs in last hole from the stitching holes, you made by using an awl, and make three new holes. Continue all along the long side.

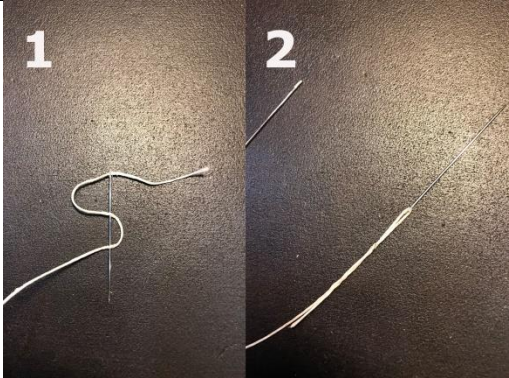
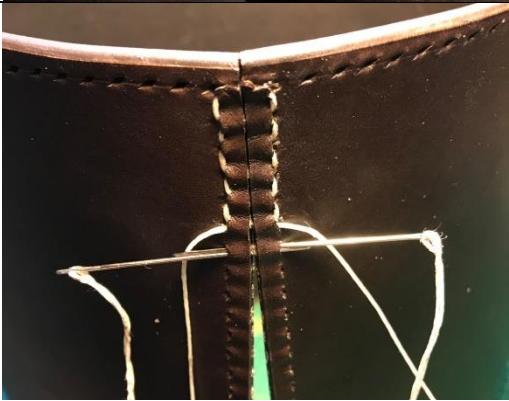




**Step 16**

Make stitching holes at the bottom part. Use the same method as described in step 14, where you stick out the needle in the middle of the leather by the edges. The bottom consists of two layers of leather, but only the top layer of leather needs to be pierced with the awl.





<p><b>Step 17</b> <b>(Threading you needles)</b></p> <p>Cut a thread six times the length of the piece, you will be stitching. Stick a needle in each end of the thread. Lock the thread by sticking the needle through the thread twice.</p>	
<p><b>Step 18</b> <b>(Stitching)</b></p> <p>Begin stitching at the top part of the wastepaper basket. Stick one of the needles through the first stitching hole and pull the thread to ensure that the thread is of same length in both sides. Continue to the next hole. Stick one of the needles halfway through and take the second needle and stick it all the way through by using the first needle as a guide. Tighten the thread, but not too hard or else the leather might rip. Finish stitching by making three stitches backwards. This way you will lock the stitching.</p>	
<p><b>Step 19</b> <b>(Glue on the bottom)</b></p> <p>Apply a thin layer of glue on the inside of the lower edge on the side piece. Apply the glue on the rough leather edge that you sanded in step 11.</p>	
<p><b>Step 20</b> <b>(Assemble the bottom and side piece)</b></p> <p>Apply a thin layer of glue all along the edge of the bottom part. Leave it to dry.</p> <p>Make sure not to place any of the holes on the bottom piece by the assembly of the edges of the side piece.</p> <p>Make sure that the bottom and side piece are aligned, as well.</p>	

**Step 21**  
**(Stitching holes at the bottom of the side piece)**

The glue must be completely dry, before moving on in the process.  
Stick the diamond-shaped awl through the hole that was made on the bottom piece to show direction.  
Put the round awl through the hole in the side of the small crease that was made in step 10.  
Slant the awl towards the bottom part. It takes a bit of practice, so please be patient.



**Step 22**  
**(Stitching)**

Begin stitching where the two edges of the side piece are connected. Stick a needle through the first hole and pull the thread to ensure that the threads are of same length in each side.  
Continue with the next hole. Stick one of the needles halfway through and take the second needle and put it through the hole by using the first needle as a guide.  
Tighten the thread, but make sure not to tighten to excessively, because the leather might rip. Once you have sewn all the way around the edge, you must make three stitches backwards to secure the stitching.  
In this way, you will attach the bottom piece to the side piece.



**Step 23**  
**(Stitch the top edge)**

Begin stitching by sticking one of the needles through a stitching hole. Make sure that the thread is of same length in both sides.

- Take the needle from the front through the next hole and out the back.
- Hold the thread down tightly in the "corner".
- Take the other needle from the back and out the same hole as the first needle and pull upwards.
- Repeat this process.





Once you have sewn all the way around, you must make three stitches backwards to secure the stitching.	
--	--

Now you have finished your wastepaper basket 😊

**TIP** If you have any leather left over from this project, you can use it to make a pencil holder by using the same method as for the wastepaper basket.

Make the bottom pieces with a diameter of 8 cm and the side piece measuring 9.5 cm x 27 cm.