

Magazine holder with leather



The products you need:

- Leather
- Rotary leather punch
- Ruler
- Scissors
- Hobby knife
- Space maker
- Rotary knife
- Cutting board
- Awl
- Cork
- Needle
- Thread
- Hammer
- A piece of wood measuring approx. 2 metres
- Saw
- Rule
- Drilling machine
- Round stick approx. 1 metre
- Drill (same size as the diameter of the round stick)
- Wood glue
- Sandpaper
- Clamp (optional)
- Cardboard for template
- Pencil

Step 1

Saw the piece of wood into four pieces of the same length. All the pieces need one of their ends to be cut at an angle.

**Step 2**

You can use the floor to test out, in which angle the wooden pieces should be cut. Once you have decided on an angle, draw a line with your pencil.

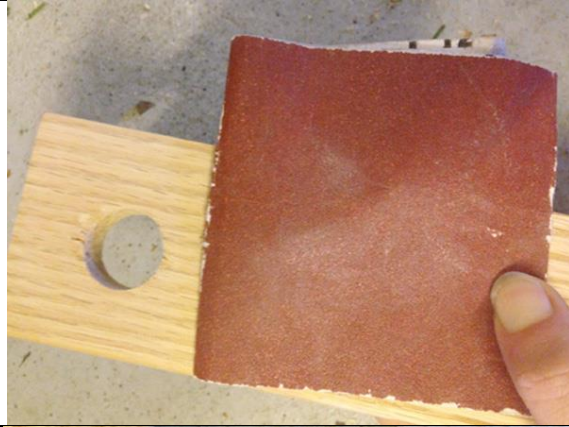
**Step 3**

Drill a hole in the opposite end of the wooden pieces (the straight ends).



Step 4

Remember to sand the edges throughout the entire process to make sure that all the edges have a smooth surface.

**Step 5**

Screw in two small screws on the inner side. To ensure that the magazine holder is stable, you must make sure that the angled ends are leveled with the floor. The screws must be short enough to not come through on the other side.

**Step 6**

You can put the two pieces next to each other to make sure that they are in the same angle.

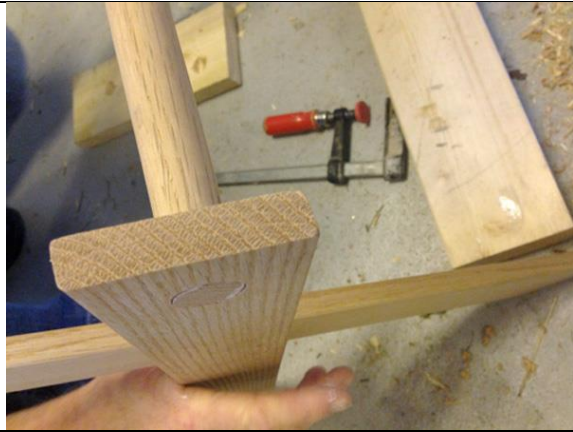
**Step 7**

Use a bit of wood glue to assemble the crossed wood pieces. If it's difficult to install the round stick, you could use a hammer. Make sure to protect the round stick by putting a piece of wood between the stick and the hammer, so that it doesn't get damaged.



Step 8

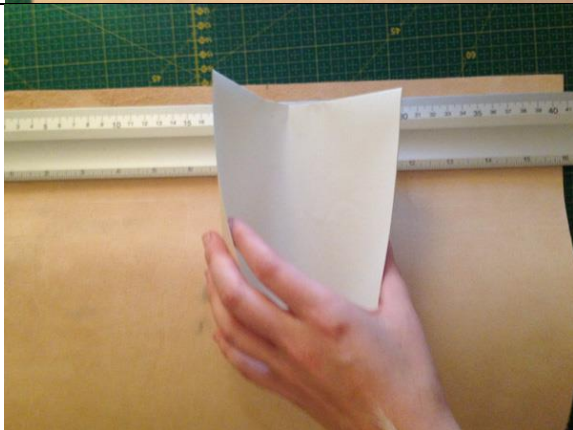
In this picture, you can see how the round stick should be assembled with the crossed wood pieces.

**Step 9**

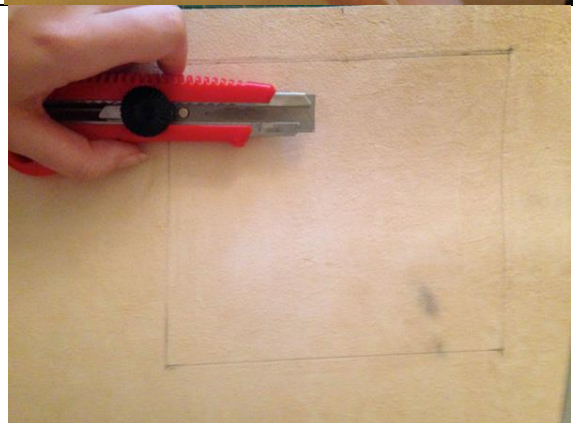
Measure out the length of your leather piece. Add additional length to the leather for folding and stitching. After this, use your rotary knife to make nice, straight edges.

**Step 10**

Make a template of cardboard to fit the size of the hole. Place your template in the middle of the thin edge on your leather piece. Add an additional 3 cm from the uppermost edge, so that you have enough room for stitching.

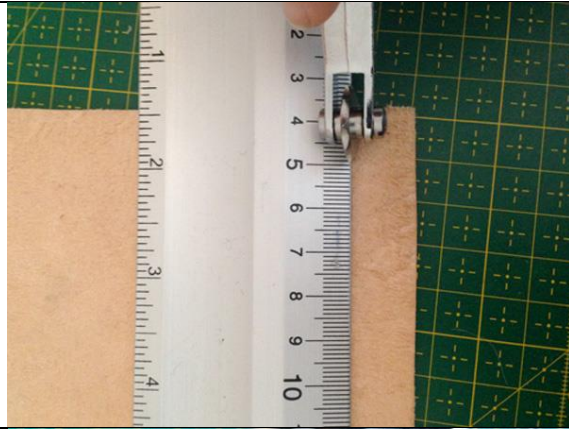
**Step 11**

Sketch out the template on the leather. Repeat this process in both sides.



Step 12

Measure out 1.5 cm from the edge. After this, use your space maker to mark out the stitching holes. Start marking 0.5 cm from the edge, so that the first hole isn't placed right on the edge of the leather.

**Step 13**

Use the smallest punch on your rotary leather punch and puncture the markings, you made in step 12.

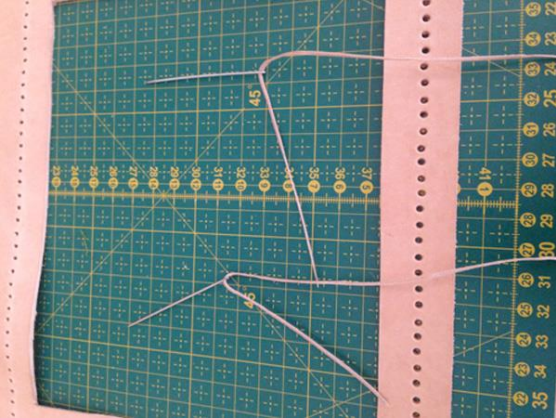
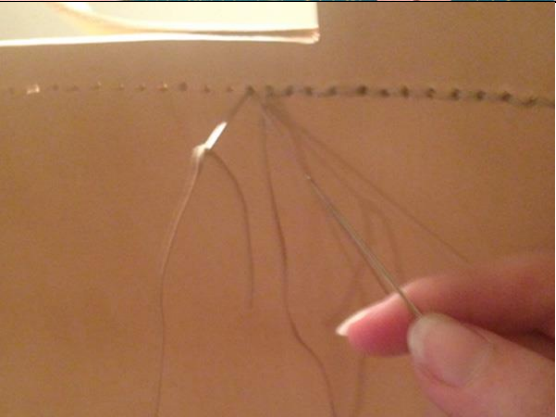
**Step 14**

Fold the leather so it fits the hole you made earlier. After this, use a pointy pencil to mark the holes onto the other side.

**Step 15**

Use an awl and hammer to make the holes, you've just marked with a pencil. Remember to use a piece of cork underneath to protect your table. After puncturing all the holes, you can use your awl to expand the holes a bit more.



<p>Step 16</p> <p>Take a long piece of thread and attach a needle in both ends.</p>	
<p>Step 17</p> <p>The needles must be put through the same hole from each side, so that they cross each other. Remember to tighten well after each stitch.</p>	
<p>Step 18</p> <p>Tie a knot on the inner side, so that it isn't visible.</p>	