

Dice cup in leather

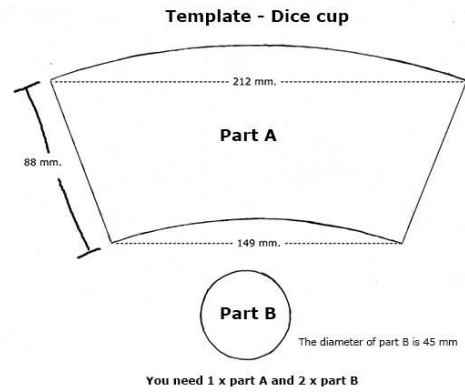


The products you need:

- Double shoulder 3.0-3.2 mm. You need a piece at approx. 20x120 cm
- Stabilo pen
- Craft leather scissors
- Flat nose plier
- Waxed linen thread – 18/5
- 2 space makers, one in size 4 mm and one in size 5 mm
- Cutting board
- 2 awl handles
- 2 diamond pointed awls, 50 mm
- Cork sheet
- Japanese stitching groover
- 2 sewing needles, size 4
- Wood slicker
- Glue, Klebfest

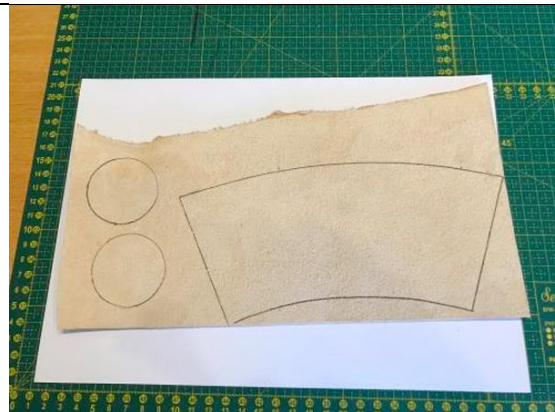
Step 1

Download and print out the template further down this page. Cut out the template by using a pair of paper scissors.



Step 2

Sketch out the template on the leather using a stabilo pen or a leather marking pen. Cut out the various parts by using a knife or a pair of scissors.



Step 3

Glue the two bottom pieces (part B) together back-against-back. Apply glue to both the pieces. Leave the glue to dry slightly and assemble the two pieces. It's important that the edges align.



Step 4

Bend part A around the bottom (part B) to see if the length fits. If it's too long, you'll need to cut off the excess length. If the length's too short, you can cut the bottom part smaller.



Step 5

Use a Japanese stitching groover (with guide attached) for marking, where your stitch will be on part A. Use the Japanese stitching groover to make a crease 4 mm from the edge all the way around part A.

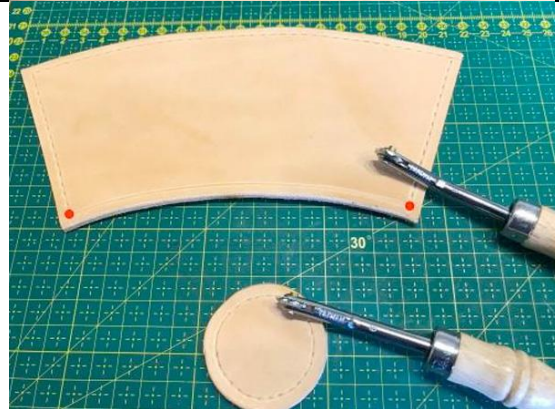
On the bottom (part B) you must make a crease 3 mm from the edge all the way around.



Step 6

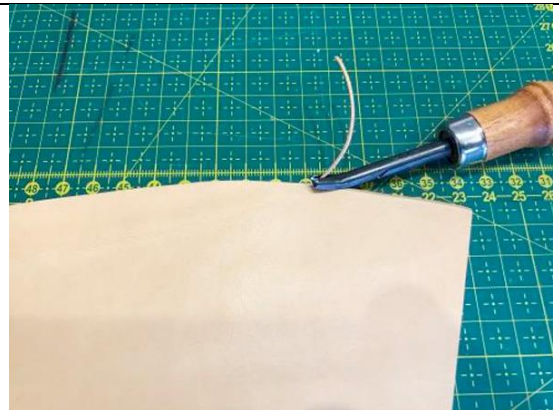
Use a space maker in size 5 on part A. Start the marking on the two straight lines. It's very important that the holes on both sides are completely parallel to each other.

After this, you must make markings at the top edge of part A. The bottom edge of part A doesn't need to get markings for stitching holes. Mark part B with the space maker in size 4, in the crease you made in step 5.



Step 7

Bevel the uppermost edge of part A (optional).



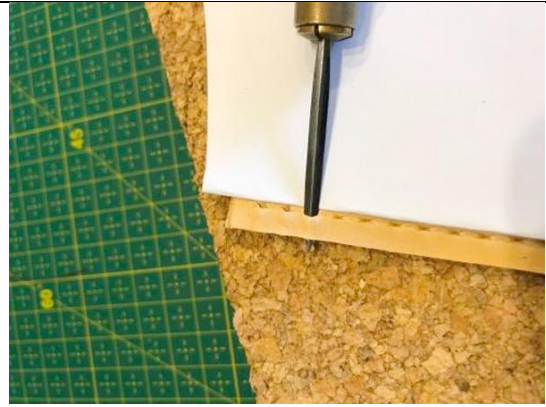
Step 8

Make the edge wet with water and use the wood slicker to polish (optional).



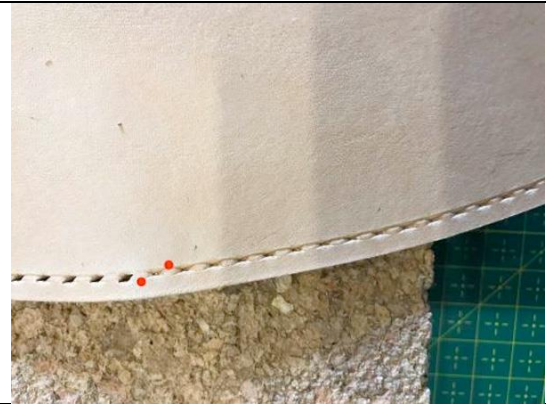
Step 9

Puncture the two straight sides of the leather with an awl. The sides will be stitched together later in the process. Turn the diamond-shaped awl, so that you make a flat and slanted puncture from your marking and out through the middle of the edge of the leather. This means that you won't be sticking the awl all the way through the back, but out through the edge. By puncturing holes like these, you'll be able to stitch your dice cup, without it having visible stitches on the inside. Optionally, you can fold a piece of paper and lay it on top of the leather. This way, you'll avoid making any scratches or flaws on the leather, when using the awl.



Step 10

Puncture the uppermost edge with an awl. Here you must puncture the holes straight through the leather, so that the awl will come out on the back of the leather. Slant the awl 45 degrees from the edge. The space maker makes a small cross, which can be used to get the awl in the right angle.



Step 11

(The bottom: awl the bottom)

Turn the diamond-shaped awl, so that you'll achieve a flat, slanted puncture from your marking and out in the middle of the edge of the leather. Make sure that the distance between these holes is the same.



Step 12

Cut a thread and thread it in both ends.

Lengths of the threads:

- For the straight side on part A: 8 x the length you'll be stitching.
- For the uppermost edge on part A: 6 x the length you'll be stitching.
- For attaching the bottom piece to the side piece (part A + B): 8 x the length you'll be stitching.



Step 13 (Stitching)

Start off by stitching the two straight sides together. Start stitching from the bottom edge.

1. Stick one of the needles through a hole in the front and out the edge. Continue by sticking the same needle through the stitching hole on the edge of the opposite side. After sticking the needle through the two parallel holes on the edge of the leather, the needle will come out on the front of the leather. Pull the thread to ensure that it's of same length in both sides.
2. Repeat the first step with the second needle. Stick the needle through the next stitching hole on the front of the same side as where the needle is. Stick the needle through the parallel holes on the edges. After this, the needle will reappear on the front of the leather. Tighten the thread.
3. Both needles will now be on the front, at each their stitching hole, parallel to each other.
4. Continue stitching all the way up to the top edge by using this method.
5. Finish off the stitching by making three stitches backwards and cut off the threads.



Step 14 (Apply glue)

Apply glue to the edge of the bottom and on the inside of the bottom edge of part A. Attach the bottom. Make sure that none of the holes on the bottom align with the middle of the seam.



Step 15

Use your awl to make the last few holes on the bottom.

Use the holes from the bottom (part B) as a guide. You'll need 2 diamond-shaped awls for this. Flip your dice cup to turn it upside-down. Stick the first awl through one of the holes on the bottom. The first awl will indicate how much the second awl should be slanted, when puncturing through the crease on part A.



Attach the bottom and side together by using saddle stitching.

Step 16

Have fun! 😊

